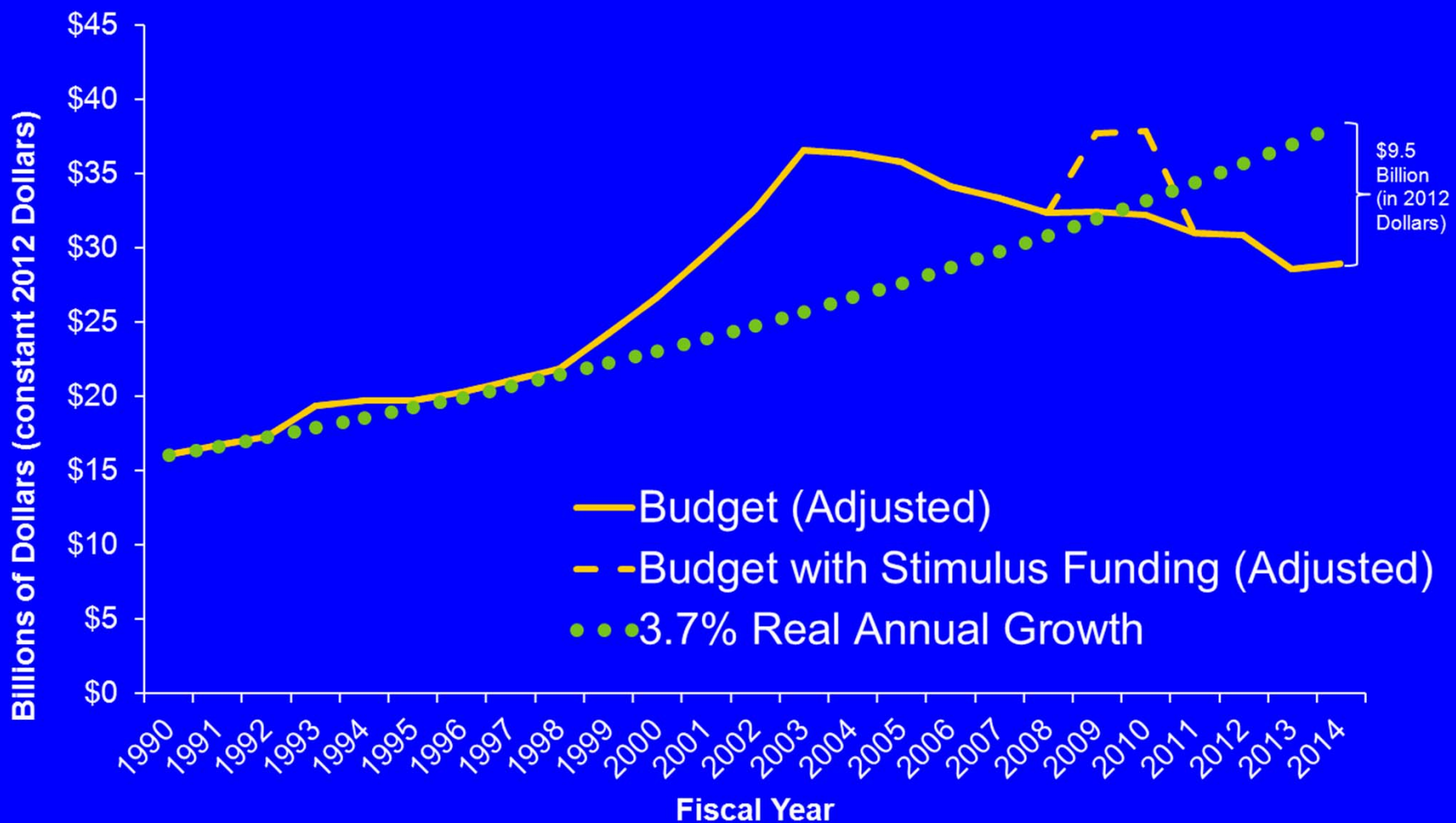


Presentation to the President's Council of Advisors on Science and Technology

September 19, 2014

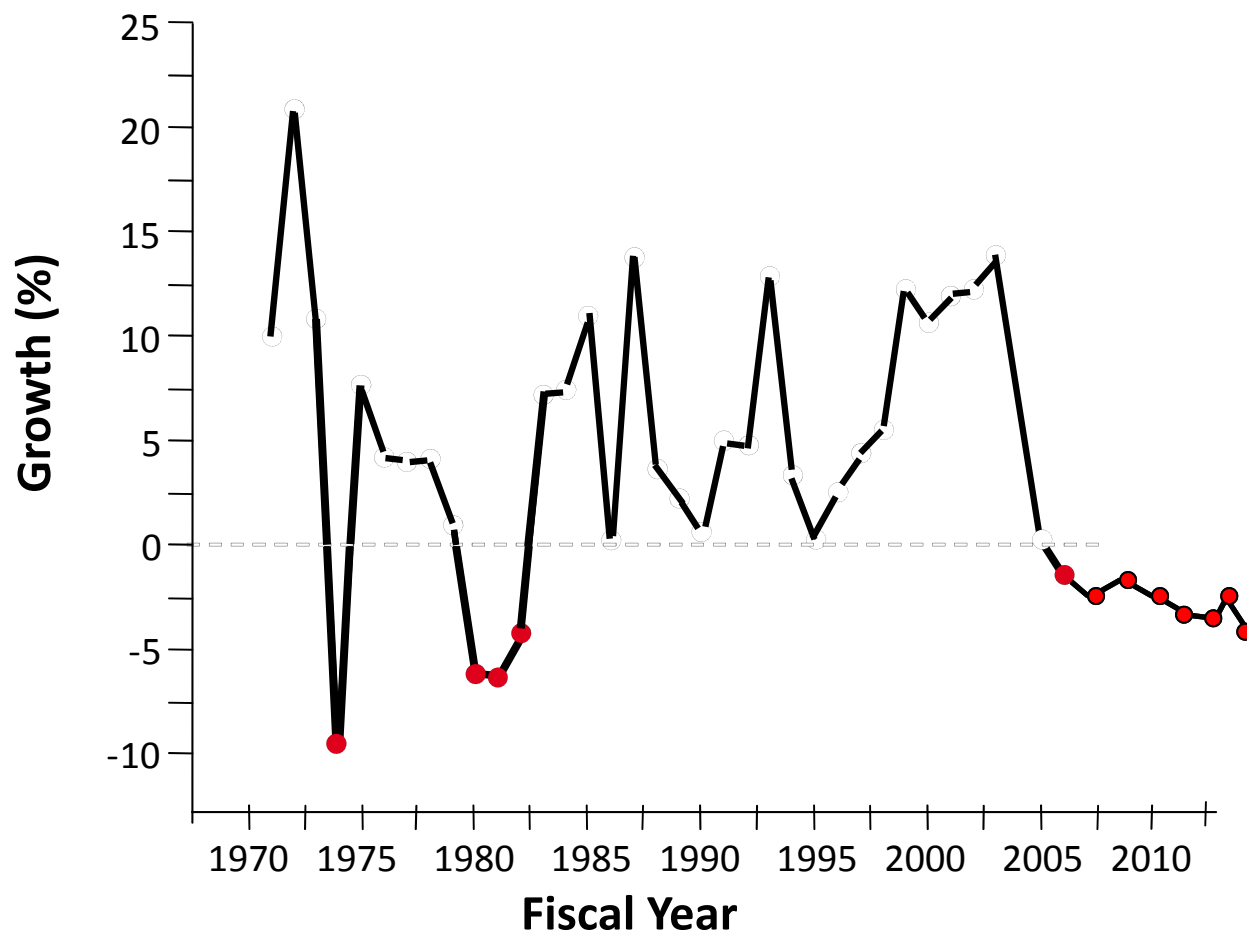
Bruce Alberts
Marc Kirschner
Shirley Tilghman
Harold Varmus

National Institutes of Health Funding 1990-2014



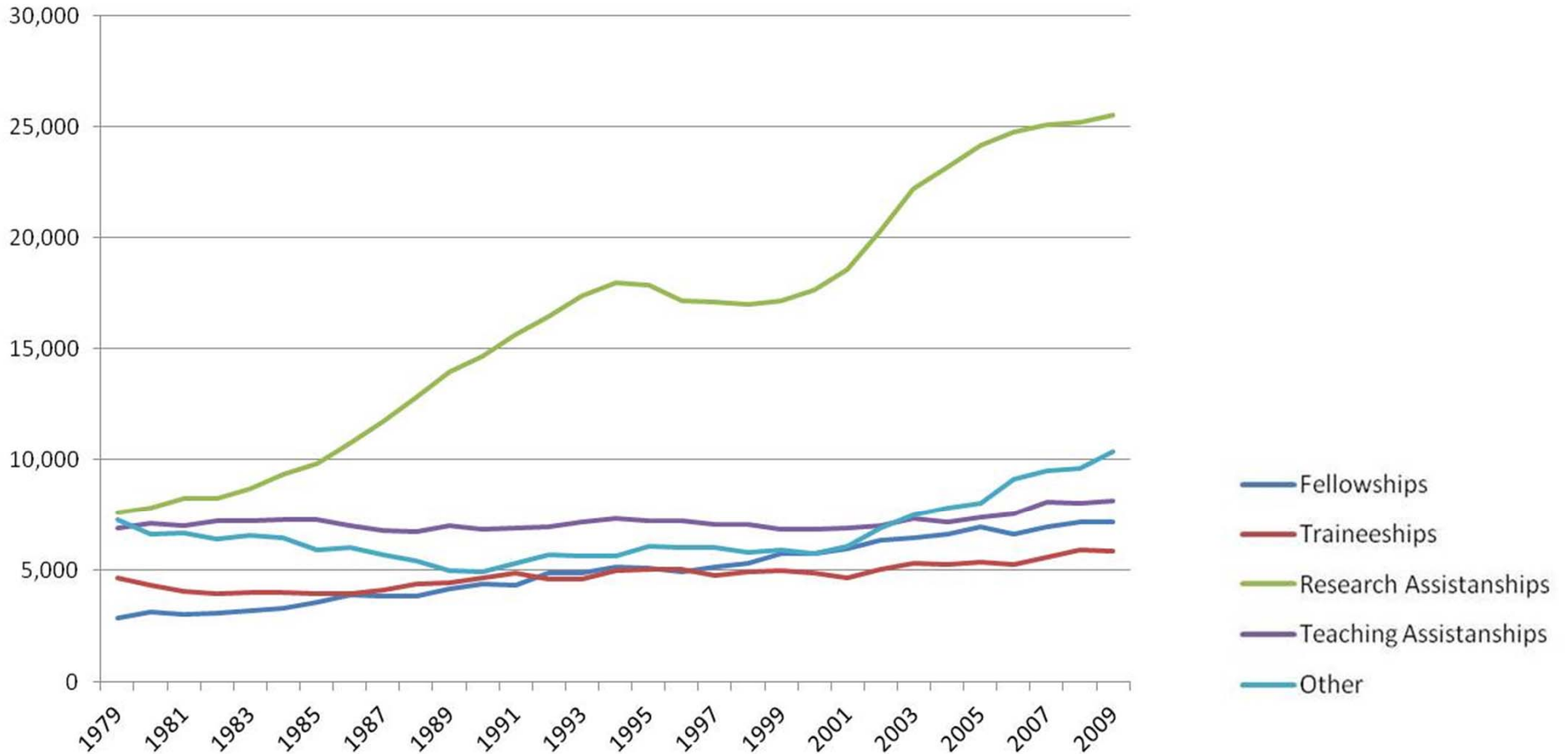
The 3.7 % Real Annual Growth is based on average real growth between 1971–1997. Dollar values are adjusted to 2012 Dollars using the Biomedical Research and Development Price Index, <http://officeofbudget.od.nih.gov/gbiPriceIndexes.html>.
Source: NIH Office of Extramural Research and Office of Budget source data (March 29, 2014)

Annualized Growth of the NIH Budget, 1971 to 2014



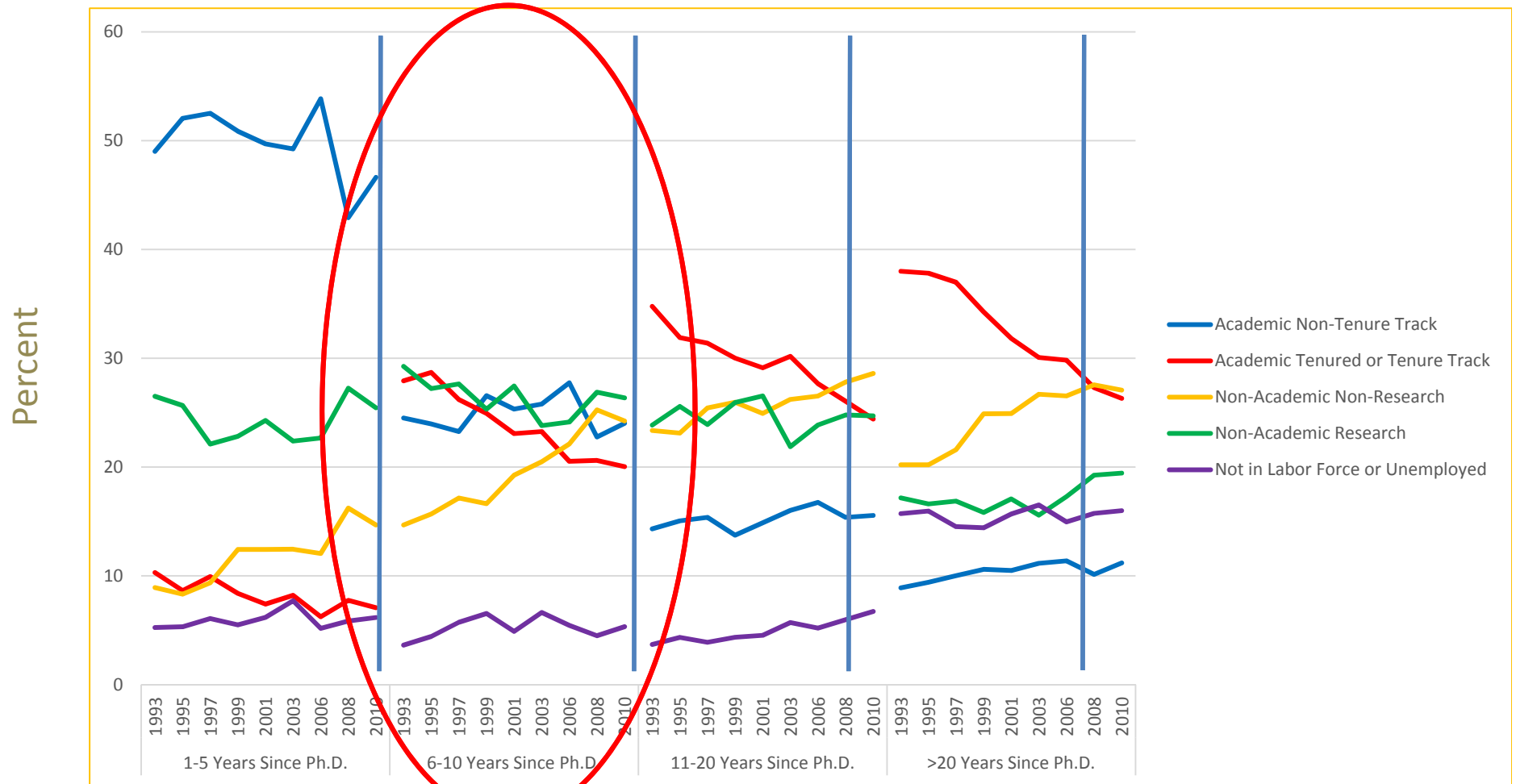
Source: Adapted from Loscalzo, NEJM (2006)

Doctorate Students by Type of Support

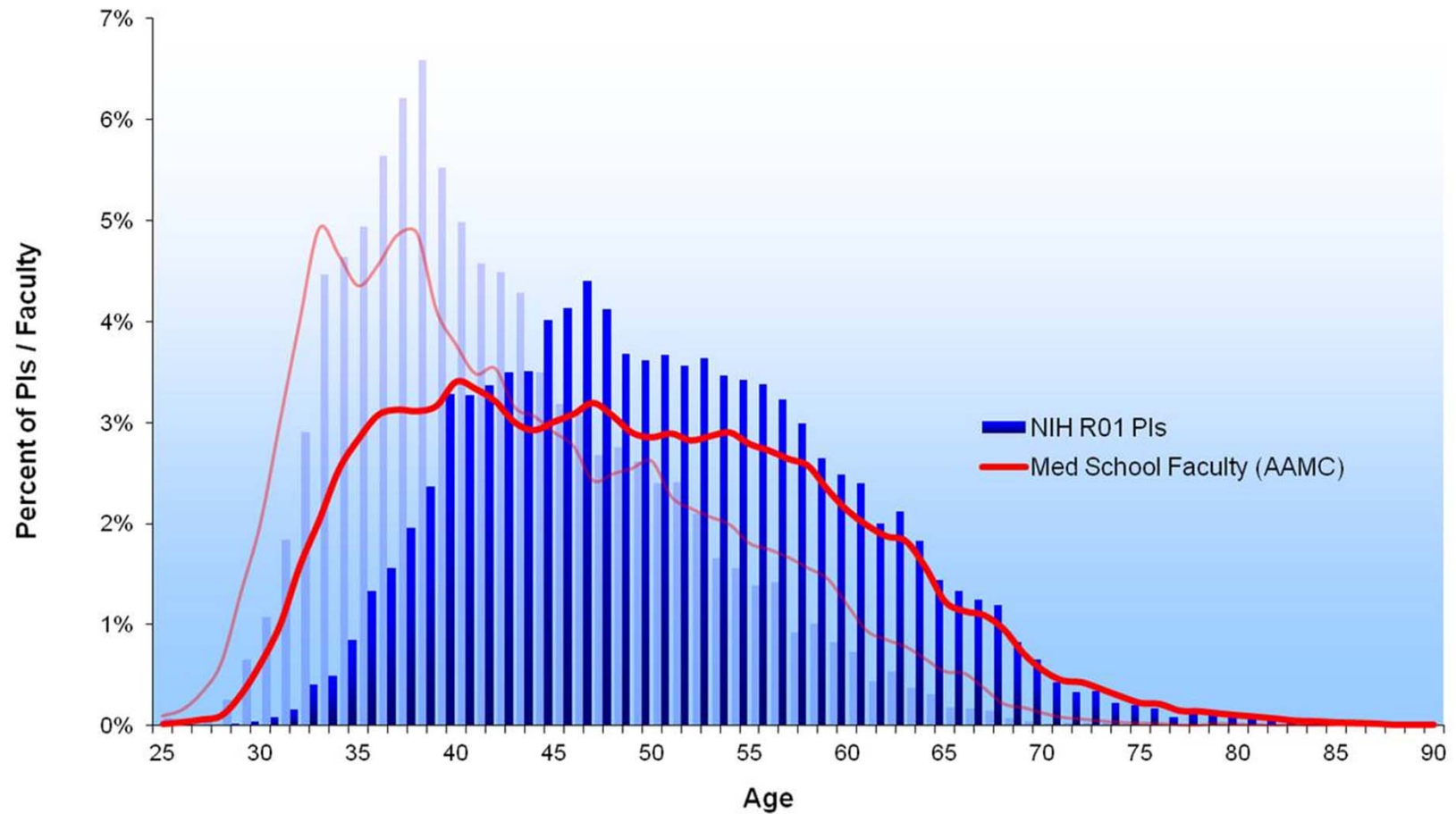


Source: Graduate Student Survey

U.S. Trained Biomedical PhD employment, by Years Since Degree

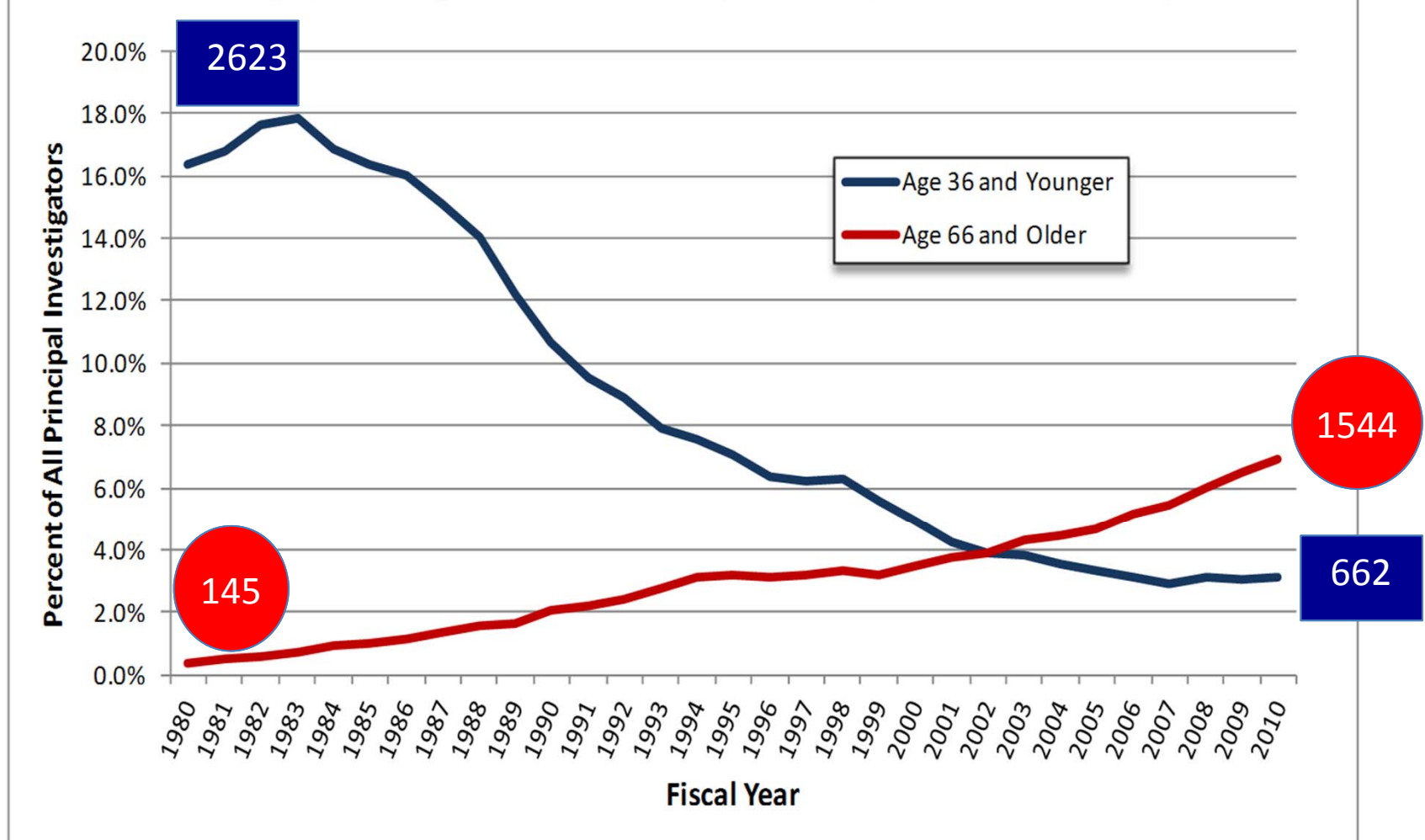


Age Distribution of Med School Faculty in 1980 (background) and 2010 (foreground)



Sources: NIH and AAMC

Percentage of NIH R01 Principal Investigators Age 36 and Younger and Age 66 and Older (Fiscal Years 1980 to 2010)



The average age of an investigator receiving his or her first NIH R01 grant is approaching 42 years of age!